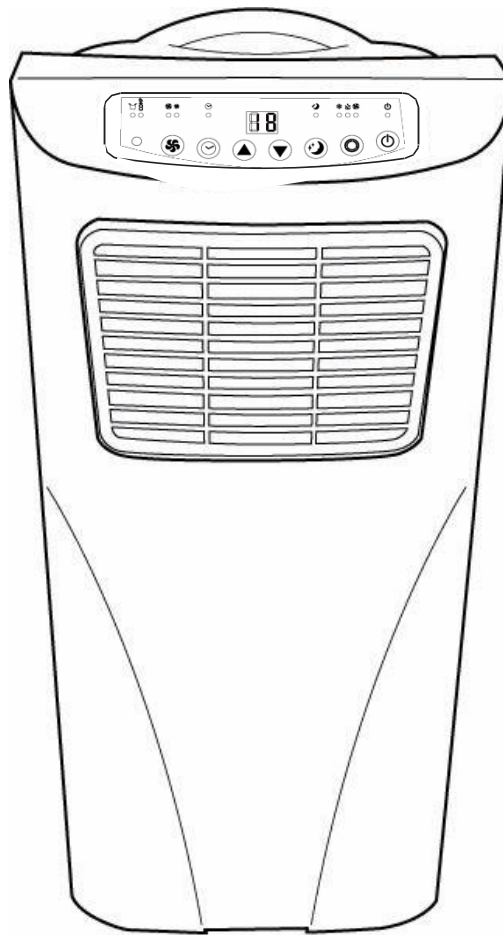


CLIM9000CE

PORTABLE AIR CONDITIONER

USER MANUAL



Please read this user manual before using this innovative Air Conditioner and keep it safe for future reference.

SAFETY INSTRUCTIONS

Important!

- Carefully read the instructions before operating the unit
- This appliance is for indoor use only.
- Rating: This unit must be only connected to a 220-240 V / 50 Hz earthed outlet.
- Installation must be in accordance with regulations of the country where the unit is used.
- If you are in any doubt about the suitability of your electrical supply have it checked and, if necessary, modified by a qualified electrician.
- This air conditioner has been tested and is safe to use. However, as with any electrical appliances - use it with care.
- Disconnect the power plug from socket before dismantling, assembling or cleaning.
- Avoid touching any moving parts of the appliance.
- Never insert fingers, pencils or any other objects through the guard
- This appliance is not intended for use by persons (including children) with reduced physical, sensory or mental capabilities. It is also not intended for use by those with a lack of experience and knowledge, unless they have been given supervision or instruction concerning the use of the appliance by a person responsible for their safety.

Do not leave children unsupervised with this appliance.

- Do not clean the unit by spraying it or immersing it in water.
- Never connect the unit to an electrical outlet using an extension cord. If an outlet is not available, one should be installed by a qualified electrician.
- Never operate this appliance if the cord or plug is damaged. Ensure the power cord is not stretched or exposed to sharp object/edges.
- A damaged supply cord should be replaced by the manufacturer or a qualified electrician in order to avoid a hazard.
- Any service other than regular cleaning or filter replacement should be performed by an authorised service representative. Failure to comply could result in a voided warranty.
- Do not use the appliance for any other purposes than its intended use.
- **The air conditioner unit must always be stored and transported upright, otherwise irreparable damage may be caused to the compressor; if in doubt we suggest waiting at least 24 hours before starting the unit.**
- Avoid restarting the air conditioning unit unless 3 minutes have passed since being turned off.

This prevents damage to the compressor.

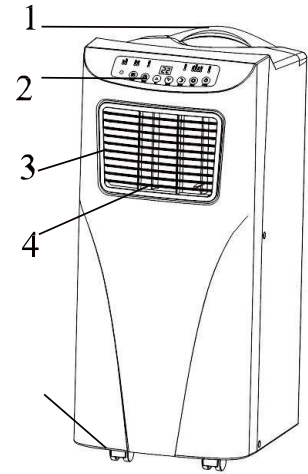
- Never use the mains plug as a switch to start and turn off the air conditioning unit. Use the provided ON/OFF switch located on the control panel.
- Always place the unit on a dry and stable surface.
- The appliance should not be installed in laundry or wet rooms

Energy Saving and Unit Safety Protection Tips

- Do not cover or restrict the airflow from the outlet or inlet grills.
- For maximum performance the minimum distance from a wall or objects should be 50cm.
- Keep the filters clean. Under normal conditions, filters should only need cleaning once every three weeks (approximately). Since the filters remove airborne particles, more frequent cleaning may be necessary, depending on the air quality.
- For the initial start up set the fan speed to maximum and the thermostat to 4-5 degrees lower than the current temperature. After, set the fan switch to low and set the thermostat to your desired setting.
- To protect the unit we recommend not using the cooling function when the ambient temperature is higher than 35°C.

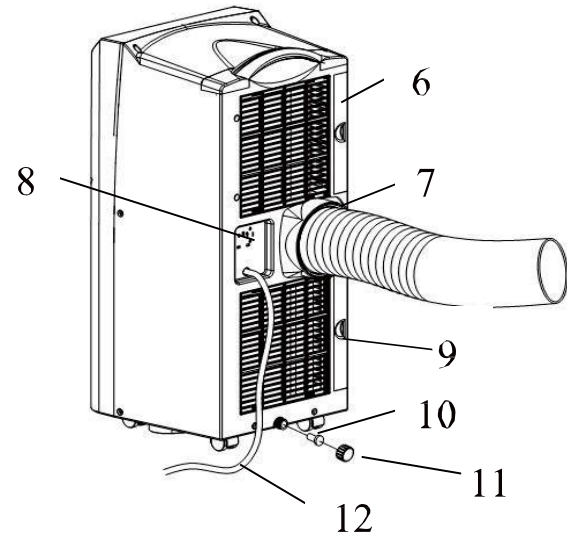
PARTS

1. Handle
2. Control Panel
3. Air-outlet
4. Fan blade
5. Castor



Back Side

6. Filter frame upper
7. Exhaust connector
8. Power Cord Location
9. Filter Frame Lower
10. Rubber plug
11. Plug Cap
12. Power supply cord



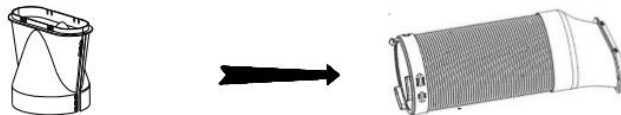
Installation

Warning: Before using this unit, please keep it upright for at least 3-4 hours.

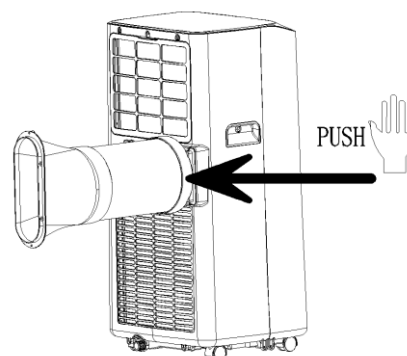
This unit can easily be moved from one room to another.

While moving the unit please note that it must always be kept upright and then placed on an even surface.

1. Assemble the fishtail connector on to the hose.



2. Assemble the exhaust hose to the air conditioner body.



Extend one head of the hose and screw it into the unit anti-clockwise. The hose can be removed by screwing the hose clockwise.

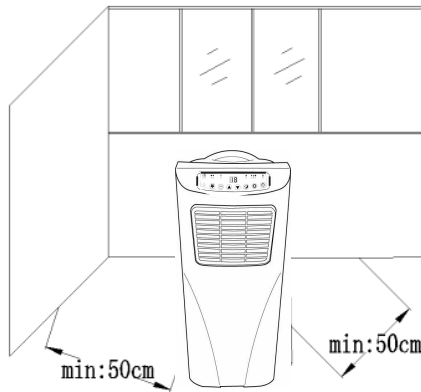
3. In the same way connect the hose to the assembled adaptor (at least three rotations).

4. Installation of window kits.

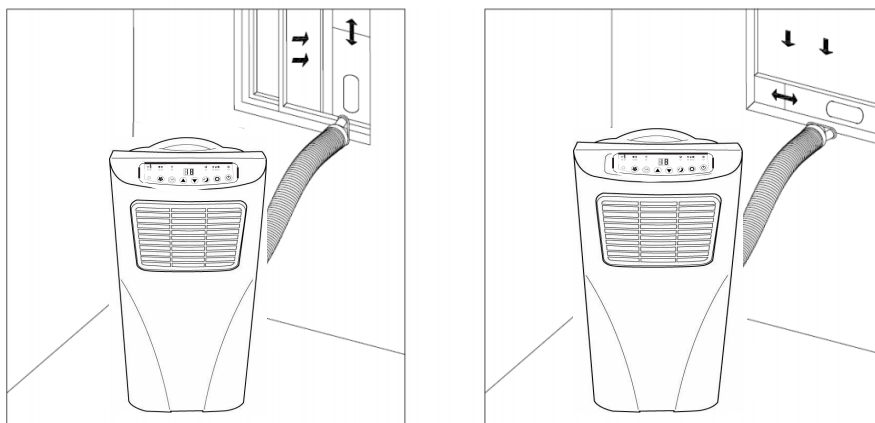
Partially open the window and then fix the window kit to the window.



5. Make sure the unit is upright and there are no obstructions to the air inlets and outlet grills.



6. Fix the other end of the hose to the air-outlet window kit.

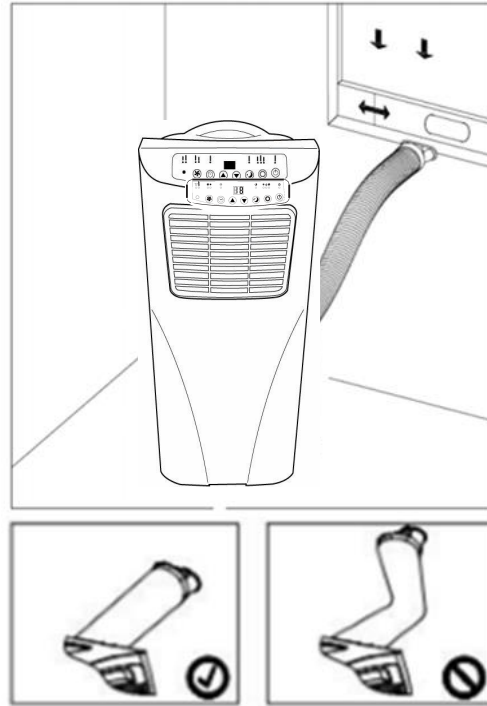


Note: The window kit is only designed to be installed with sliding or sash windows or doors. The window kit is not designed or to be used with any other style of windows. However, the fish tail adaptor can be used with most windows / doors. When using in cooling mode ensure that the opening left around the fishtail is as small as possible as the cooling will be less efficient. The best form of installation is through a wall duct. By properly venting you expel hot air from your room while efficiently cooling it.

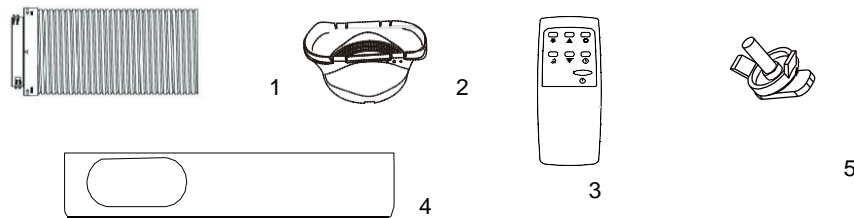
Your air conditioner can be used without venting in dehumidifier mode. Please ensure external water tank is used, monitored and regularly emptied before over spilling. Permanent plumbing can be also installed in dehumidifier mode or external uplift water pump for unattended use.

Important safeguards

The length of the soft hose extends from 28 cm to 150 cm. If hose is extended above this length the unit may malfunction and this can invalidate the warranty. The outlet vent must be well ventilated and not obstructed as this will cause the unit to overheat. Avoid bending the air hose more than 30 degrees



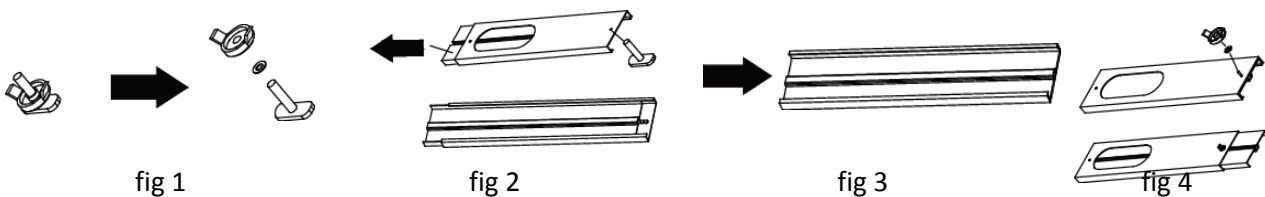
PARTS IN THE BOX



1. Exhaust Pipe 2. Adapter 3. Remote control 4. Seal plate 5. Screw/washer/nut combo

How to fix the screw of adjustable slide bar

1. Disassemble the screw, washer and nut. (fig. 1)
2. Separate 2 pieces of the slide bar and insert the screw in to the hole. (fig. 2)
3. Assemble the slide bar. (fig. 3)
4. Tighten the washer and nut. (fig. 4)

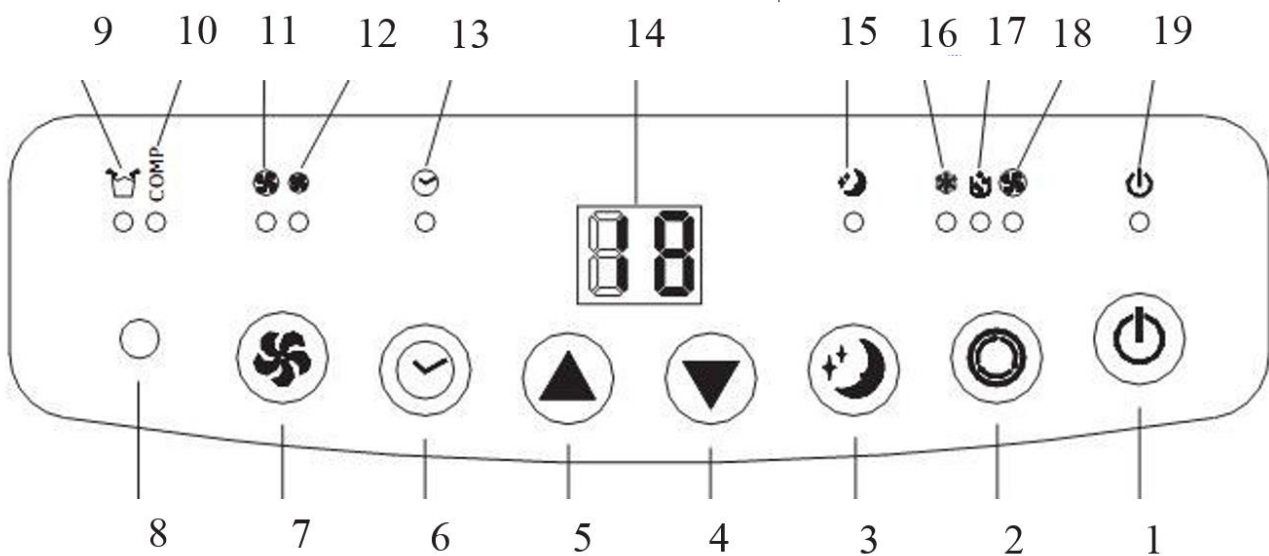


FEATURES AND OPERATION

1. FEATURES

- Self-evaporative system - no external water tank needed when vented correctly or reduced humidity
- Modern design and simple operation
- LED screen, indicates temperature and operation mode
- On/Off timer function- allows you to choose when the unit operates
- Castors and handles for portability
- Compressor protection technology for extended life span

2. OPERATION



Selection Keys and Display

1. Power On/ Off
2. Mode Selection
3. Sleep Mode
4. Down (temperature/ timer)
5. Up (temperature/ timer)
6. Timer selection
7. Fan Mode
8. RC Sensor

Indicator LED

9. Tank Full indicator light
10. Compressor ON indicator
11. Low Fan mode
12. High Fan mode
13. Timer ON mode
14. LED Light
15. Sleep Mode
16. Cooling mode
17. Dehumidifier mode
18. Fan only mode
19. Power ON mode

When plugged in the unit is automatically in standby status. Press UP and DOWN keys simultaneously to change temperature display between Celsius and Fahrenheit (certain models only).



ON/OFF (7)

- Press "POWER" to switch the unit On or Off
- The unit will be turned to cooling mode preset to 22°C target temperature. Press again and the unit will switch off.

Mode button (2)

- Press this key to choose Cooling Fan, SLEEP or Dehumidifying Mode.

Cooling Mode

- After machine turns on, default value is cooling mode with 22°C and low fan speed.
- Press "MODE" to select cooling mode, cooling mode indicator **(16)** turns on
- Press "UP  (5)" or "DOWN  (4)" to adjust temperature (from 16°C to 31°C)
- Press "FAN" to select fan speed (low, high)

Fan Mode

- Press "MODE" to select fan mode, fan mode indicator **(D)** turns on

Timer Mode (6)

- Under standby mode, press "TIMER" to setup the power-on time, press "TIMER" to adjust the timer (from 1 to 24 hours). Timer indicator turns on. Unit will start after selected number of hours.
- Under power on mode, press "TIMER" to setup power-off timer. Press "TIMER" to adjust the timer (from 1 to 24 hours). Timer indicator turns on. Unit will stop after selected number of hours.
- Timer functions cannot be combined or repeated. Timer mode indicator **(13)** turns on

Sleep Mode

- Press Mode button **(3)** until unit enters into sleep mode, default value of fan speed is low. Sleep mode indicator **(15)** turns on
- When the sleep mode is turned on, under cooling mode only, one hour later, set temperature will go up 1 degree Celsius, after another hour the set temperature will go up another degree than kept at this temperature.
- Sleeping mode is invalid under dehumidifying and fan mode.
- If internal tank full, machine standby and mode selection, sleeping mode will be cancelled.

Note: Sleep mode is not operational in the dehumidifying or Fan mode.








Compressor Protection

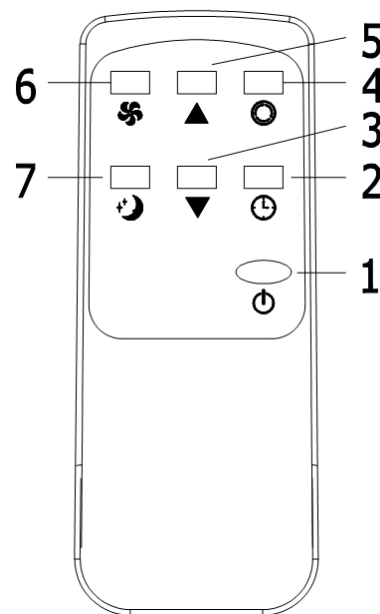
- There is a three minutes compressor start delay after power on or restart.

3. Remote Control

The air conditioner can be controlled via a remote control. Two AAA-batteries are required to use the remote control.

Note: the air flow direction cannot be adjusted with the remote control.

1. **Power:** Press the  key to turn on or turn off the machine
2. **Timer:** Press the  key to set the timer
3. **Down:** Press the  key to decrease temperature and timer
4. **Mode:** Press the  key to switch between cooling, fan, dehumidifier
5. **Up:** Press the  key to increase temperature and timer
6. **Fan:** Press the  key to select high / low fan speed
7. **Sleep Mode:** Press the  key to turn on the sleep mode



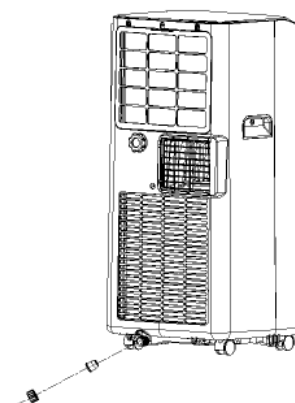
Multi protective function

- 4.1. Frost Protection Function:** In cooling, dehumidification or economic power saving mode, if the temperature of the exhaust pipe is too low, the machine will automatically enter protection status; if the temperature of the exhaust pipe rises to a certain temperature, it can automatically revert to normal operation.
- 4.2. Overflow Protection Function:** When the water in the internal water tank exceeds the warning level, the machine will automatically sound an alarm, and the LCD temperature display area will show "FL". At this point, you need to move the drainage pipe connecting the machine or the water outlet to sewer, other drainage area or a flat tray to empty the water (details see *Drainage Instructions* at the end of this chapter). After the water is emptied, the machine will automatically return to the original state.
- 4.3. Automatic Defrosting (cooling models have this function):** The machine has automatic defrosting function: during defrosting, heating symbol on the display screen will flash.
- 4.4. Automatic Thermal Protection:** To protect the service life of the machine, the machine has automatic thermal protection in heating mode. During the protection period, the compressor and the lower motor will stop operation and will automatically return to normal heating state after the temperature of the machine recovers.
- 4.5. Protection Function of the Compressor:** To increase the service life of the compressor, it has a 3-minute delay start protection function

EMPTYING THE WATER CONTAINER

1. Manual drainage:

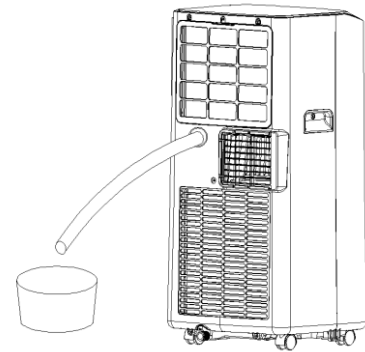
- 1.1 When the internal water tank is full the unit will stop working.
- 1.2 Shut off the unit and unplug. Try not to move the model abruptly as this may cause the internal water tank to spill out.



- 1.3 Place a tray under the water plug or place the unit in a drainage area.
- 1.4 Screw off the drain plug and unplug the water rubber stopper - water will drain from the container.
- 1.5 Put the water rubber stopper back and screw the drain plug cap back into place.

2. Continuous drainage:

- 2.1 Screw off the drain plug cap and unplug the water rubber stopper
- 2.2 Use a water pipe to connect to the water outlet.
- 2.3 You can plumb this pipe into your current plumbing system, lead it outside and use gravity fall or use a water pump.



Note: This model has a self-evaporative function, which reduces the need to empty the water tank. If the unit is vented correctly most of the water is reused to cool the condenser coils and any excess is evaporated. Please do not use continuous drainage if you intend to use the self-evaporating facility.

Maintenance

Cleaning

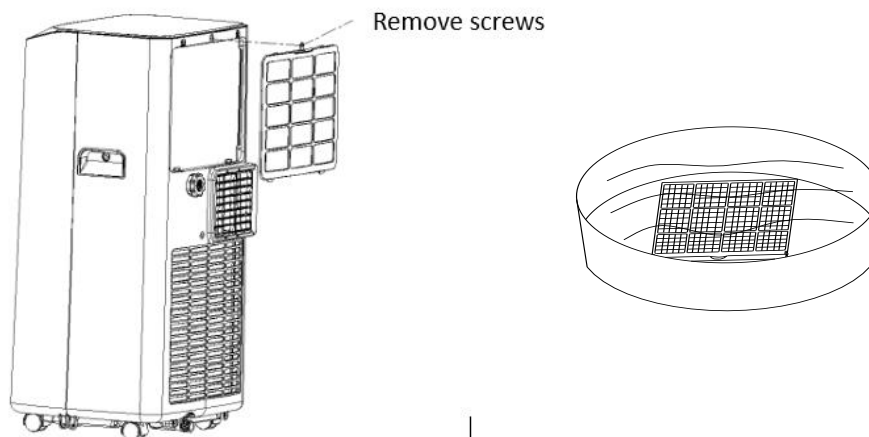
Please shut off the unit and unplug from the mains before cleaning or performing any maintenance

Clean the surface

Clean the surface of machine with a wet soft cloth. Don't use chemicals, such as benzene, alcohol, gasoline, etc.; otherwise, the surface of the air conditioning will be damaged or even the whole machine will be damaged.

Air filter cleaning

If the filter screen is clogged with dust, the effectiveness of the air conditioning is reduced. Please schedule clean the filter screen once every two weeks or as often as necessarily in your environment.



A: Clean the upper filter screen frame

- a: Grip the edge of the evaporator filter screen frame with both hands. Pull out to remove the filter screen from its frame. If present, unscrew the screws fixing the filter before removing it (as shown in the above figure) .

b: Put the evaporator filter screen into warm water with neutral detergent (about 40°C /104°F) and dry it in the shade after rinsing clean.

B: Clean the lower filter screen frame

- a: Hold the handle of the air inlet filter screen frame, and pull it outward gently to remove it.
- b: Put the filter screen into warm water with neutral detergent (about 40°C / 104 °F) and dry it in the shade after rinsing clean.

End of Season Maintenance

1. Pull out the plug from the drainage hole and empty the internal tank. You can also drain the water by leaning the unit.
2. Then switch the unit to low fan mode.
3. Keep the unit in this mode for half day - until the conduit is dried. Doing this helps to keep the inside of the unit dry and prevents mold developing
4. Turn off the unit and pull out the plug.
5. Coil the wire and bind it together, then put it into the accessories space.
6. Separate the air-exhaust pipe and store it safely.
7. Cover the unit and keep it in a dry place.
8. Take the batteries out of remote control and store or dispose, them safely
Keep all accessories with the unit ready for next season.

Troubleshooting

Do not repair or disassemble the air conditioning. Unqualified repair will invalidate the warranty and may lead to failure, causing injuries and property damage. Only use it as directed in this user manual and only perform operations advised here.

Problems	Reasons	Solutions
The air conditioning does not work.	There is no electricity.	Turn it on after connecting it to a socket with electricity.
	The overflow indicator displays "FL".	Discharge the water inside.
	The ambient temperature is too low or too high	Only use to use the machine within temperature range of 7-35°C (44-95°F).
	In cooling mode, the room temperature is lower than the set temperature; in heating mode, the room temperature is higher than the set temperature.	Change the set temperature.
	In dehumidification mode, the ambient temperature is low.	The machine is placed in a room with an ambient temperature of greater than 17 °C. (62 °F).
The cooling or heating effect is not good	There is direct sunlight.	Use curtains to reduce the direct sun heat
	Doors or windows are open; there are a lot of people; or in cooling mode, there are other sources of heat (e.g. fridges)	Close doors and windows; increase air conditioning power
	The filter screen is dirty.	Clean or replace the filter screen.
	The air inlet or outlet is blocked.	Clear obstructions; make sure venting is correct as described in this user manual and hose is not bent
Loud Noise	The air conditioning is not placed on a flat surface.	Put the air conditioning on a flat and hard place (to reduce noise).
Compressor does not work.	Overheat protection starts.	Wait for 3 minutes until the temperature is lowered, and then restart the machine.

The remote control does not work.	The distance between the machine and the remote control is too far.	Let the remote control get close to the air conditioning, and make sure that the remote control directly faces to the direction of the remote-control receiver.
	The remote control is not aligned with the direction of the remote control receiver.	
	Batteries are dead.	Replace batteries.
Displays 'E1'.	The pipe temperature sensor is abnormal.	Clean filters and restart. Refer to service centre if issue still persist.
Displays 'E2'	The room temperature sensor is abnormal.	Clean filters and restart. Refer to service centre if issue still persist.

If problems not listed in the table occur or recommended solutions do not work, please contact the service centre.

APPENDIX



Disposal: Do not dispose this product as unsorted municipal waste. Collection of such waste must be handled separately as special treatment is necessary. Recycling facilities are now available for all customers at which you can deposit your old electrical products. Customers will be able to take any old electrical equipment to participating civic amenity sites run by their local councils. Please remember that this equipment will be further handled during the recycling process, so please be considerate when depositing your equipment. Please contact the local council for details of your local household waste recycling centres.

TECHNICAL DATA

MODEL	CLIM9000CE
Capacity Cooling	2.06kWh, 8000BTU
Rated Input	890 W
Running Current	3.95 A
Air Flow	330m ³ /h
EER rate	A
Compressor	Rotary, R410A gas
Noise	38-54dB(A) Sound Energy <65dB(A) Sound Power
Thermostat	16-31°C
Moisture removal	22L/Day
Permitted Excessive Operating Pressure	0.8/3.2MPa
Maximum Allowable Pressure	1/5Mpa
Power Supply	220-240V/50Hz
Net Weight	21kg
Dimension(L*D*H)	345*378*870mm
Unit must be vented outside when in Air Cooling and Heating mode. For the purposes of EU regulation EN12102 this is a local air conditioner and produces less than 65dB(A) sound energy.	

Please, for your own convenience, make these simple checks before calling the service line. If the unit still fails to operate call: 0871 620 1057 or complete the online form

- 1. Has the unit been standing upright for at least 2 hours?**
- 2. Is the unit plugged into the mains?**
- 3. Is the fuse OK?**
- 4. Switch the unit off and wait three minutes to see if the issue is resolved. Restart the unit.**
- 5. Check if the water tank is full.**

Office hours: 9AM - 5PM Monday to Friday

**Buy It Direct Ltd
Unit 2, The Nursery
Berristow Lane
South Normanton
Derbyshire, DE55 2FX**